

# Northern Red Oak

*Quercus rubra*



Mature



Native Range

## General Attributes

<b>Type</b>	Deciduous Tree
<b>Height</b>	60 - 80 Feet
<b>Spread</b>	40 - 50 Feet
<b>Form</b>	Rounded
<b>Utility Lines</b>	Incompatible
<b>Growth Rate</b>	Medium
<b>Life Expectancy</b>	Long
<b>USDA Zone</b>	3 - 8
<b>Root Pattern</b>	Deep Lateral

## Flowers/Foliage/Fruits

<b>Flower Color</b>	Brown
<b>Flower Season</b>	Spring
<b>Fruit</b>	Nut
<b>Fruit Color</b>	Light Brown
<b>Fruit Season</b>	Fall
<b>Summer Texture</b>	Medium
<b>Winter Texture</b>	Medium
<b>Spring Foliage</b>	Green
<b>Summer Foliage</b>	Green
<b>Fall Foliage</b>	Red
<b>Winter Foliage</b>	Bronze

## Plant Community

<b>Sun</b>	Full Sun, Partial Sun
<b>Orientation</b>	North, East
<b>Soil Texture</b>	Sandy Loam to Clay
<b>Topography</b>	Upland
<b>Plant Community</b>	Forest
<b>Succession</b>	Climax
<b>Origin</b>	MSA Zone 1, MSA Zone 2, MSA Zone 3, MSA Zone 4, MSA Zone 6, Minnesota, North America

## Soils

<b>Salt Spray Tolerance</b>	Sensitive
<b>Soil Salt Tolerance</b>	Moderate
<b>Compaction Tolerance</b>	Moderate
<b>Water Table</b>	30 Inches
<b>Drainage</b>	Moderate
<b>Flood Tolerance</b>	
<b>Drought Tolerance</b>	Sensitive
<b>Moisture Regime</b>	Moist, Wet
<b>pH</b>	4.0 through 6.5
<b>Windbreak Group</b>	

# Northern Red Oak

*Quercus rubra*



## Planting Ease

Spring Bareroot

Fall Bareroot

Spring Container

Easy

Fall Container

Easy

Spring Seed

Fall Seed

## Maintenance

Formal

Moderate

Informal

Low

2,4-D Tolerance

Sensitive

Dicamba Tolerance

Sensitive

Picloram Tolerance

Sensitive

Clopyralid Tolerance

Artificial Light

Sulfur Dioxide

Tolerant

Ozone Tolerance

Tolerant

Hydrogen Flouride

Moderate

Nitrogen Oxide

Tolerant

## Pests/Problems

Allergens

males 8, females 8

Invasiveness

Non-Invasive

Toxicity

Has toxic Stems, Leaves

Cold Injury

Not Susceptible

Storm Damage

Not Susceptible

Biological Control

Mechanical Control

Chemical Control

## Miscellaneous

Wildlife Rating

High

Insect Concerns

Major

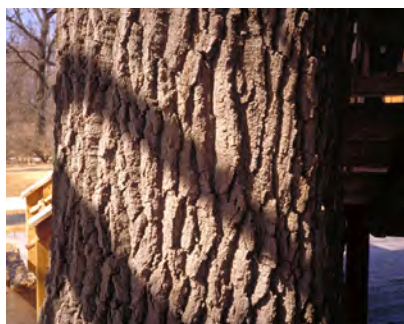
Disease Concern

Minor

Wildlife Concerns

## Comments

Susceptible to oak wilt. Withstands city conditions. Will develop chlorosis in high PH soils. Leaves persist into winter. Bare root plants require sweating; not recommended for fall planting. Toxicity reported with browsing livestock.



Bark



Dormant

# Northern Red Oak

*Quercus rubra*



Fall



Flower



Fruit



Immature



Leaf